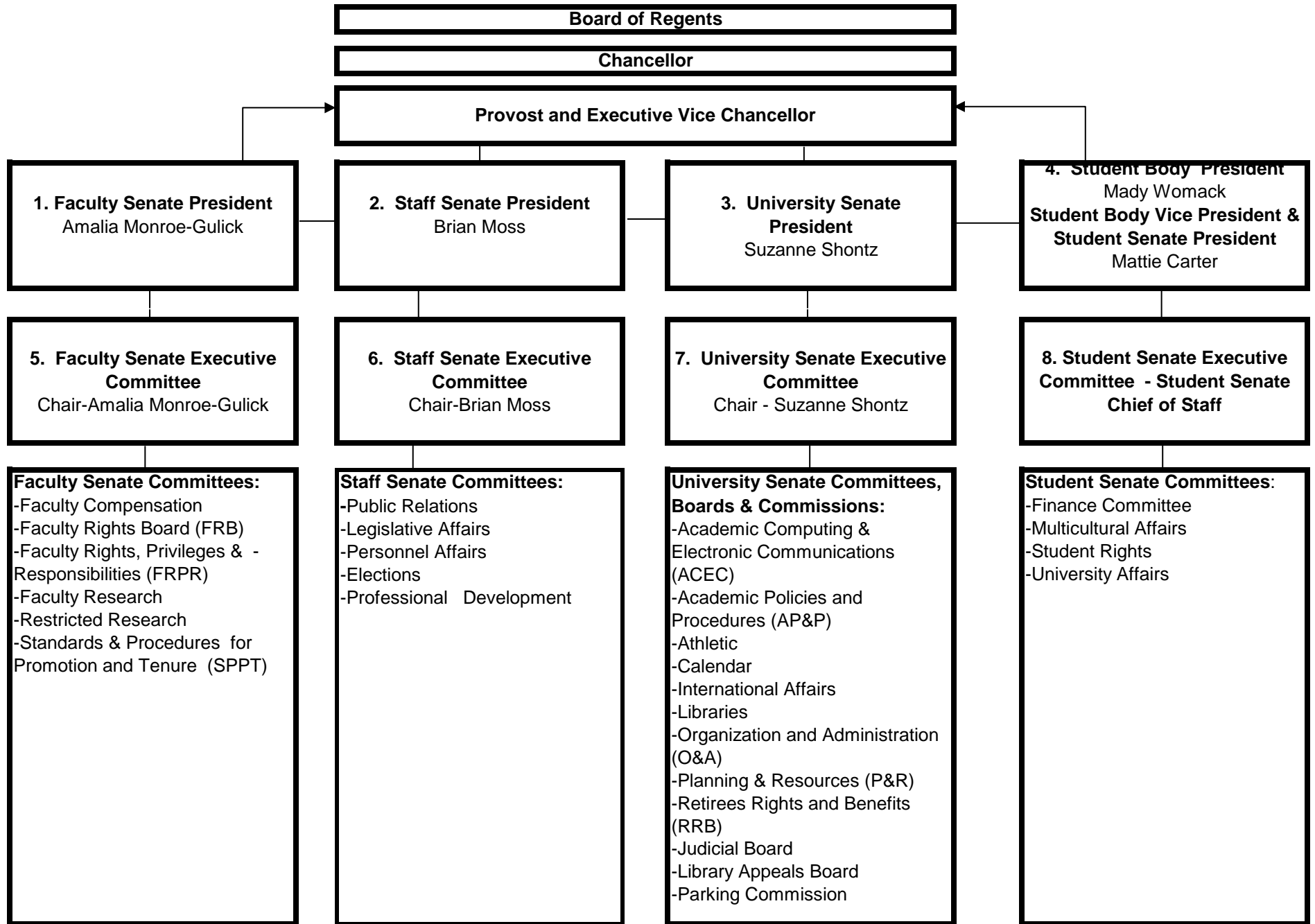


UNIVERSITY GOVERNANCE STRUCTURE FY2018



- 1. Faculty Senate:** 39 faculty members (also shall serve simultaneous terms on the University Senate).
The Chancellor and the Provost, serve Ex-Officio
- 2. Staff Senate:** one senator for every 75 staff members in a category.
- 3. University Senate:** Composed of 39 faculty members (also shall serve simultaneous terms on Faculty Senate).
12 Staff Senate members, and 13 Student Senate members. The Chancellor and the Provost shall
shall be ex-officio, non-voting members. The presidents of the student, faculty, and staff senate shall also be
ex-officio, non-voting members (if they are not among the elected members of the University Senate).
- 4. Student Senate:** See SSRR Article II. Membership
- 5. Faculty Senate Executive Committee:** 6 members of the Faculty Senate (also shall serve simultaneous terms on University Senate Executive Committee).
University Senate President & President-Elect, are ex-officio non voting members if they are not elected to the Faculty Senate Executive Committee.
- 6. Staff Senate Executive Committee:** the Staff Senate President, President-Elect, Senate Secretary, Senate Treasurer, the Technology Officer
and chairs of the standing committees. Representatives from the faculty and HR, are ex-officio, non-voting members.
- 7. University Senate Executive Committee:** 6 faculty members (who shall serve simultaneous on Faculty Senate Executive committee),
2 staff senate members that serve on the University Senate, 3 students
The presidents of the Faculty, Student, and Staff Senates shall serve as ex-officio, non-voting members
of SenEx if they are not among those elected.
- 8. Student Senate Executive Committee:** Student Body President, Student Body Vice-President, Student Senate Treasurer, Student Senate Assistant Treasurer, Student
Senate Communications Director, Government Relations Director, Student Senate Policy & Development Director, Graduate Affairs Director, Director of Internal Affairs,
Student Senate Director of Diversity & Inclusion, Chair of each standing committee or the committee's elected Student Executive Committee delegate, Student Senate Chief
of Staff, three student members of the University Senate Executive Committee as defined by the University Of Kansas Senate Code, Article IX. Section 1.